



SCHOOL CONTEXT STATEMENT

Updated 7/2/18

School number: 0798
School name: Urrbrae Agricultural High School
School Profile: Specialist Agricultural High School

Specialist Agricultural High School

Urrbrae's unique nature and environment is based on its genesis and purpose as per Peter Waite's 1913 bequest to the State.

Peter Waite was an innovative South Australian pastoralist with extensive holdings in the North East of the state. The purpose of his bequest was to build and develop an Agricultural High School to train and educate boys in modern farming techniques. The school was opened in 1932 with an enrolment of 60 boys. In 1974 the first Urrbrae girls were enrolled.

Today Urrbrae has an enrolment of over 1000 students, with both genders equally represented.

The school consists of educational buildings and facilities along with a 40 hectare (114 acres) farm. Originally only part of the farm was used for teaching programs. The Waite Agricultural Research Institute conducted agricultural trials in a majority of the paddocks until the mid 1960's when the whole property was given over to school use. At this time the Certificate of Agriculture, a two year specialist course, was introduced in Years 11 and 12.

With industry support a Suffolk sheep stud and Poll Hereford cattle stud were introduced and added to the other sheep, cattle, poultry, bees, pigs, horticulture and vegetable enterprises on the farm. Later Boer goats, horses, aquaculture, aviary birds and alpacas were added to the livestock projects conducted at the school.

Today Urrbrae's education programs reflect the school's motto of "Science with Practice". Urrbrae's emphasis on agriculture, technology and the environment drives the curriculum, and there is a heavy emphasis on linking theory to applied practices wherever possible.

In conclusion Urrbrae continues to honour Peter Waite's bequest and fulfil its purpose of educating our students in modern contemporary farming approaches, ranging from agribusiness training to tertiary based Veterinary education.

1. General information

- **School Principal:** Joslyn Fox
- **Deputy Principal, Personnel/Timetabling:** David Price
- **Assistant Principal, Agriculture:** Ross Templeman
- **Assistant Principal, Student Wellbeing Teaching & Learning:** Mark Ward
- **Year of opening:** 1932
- **Postal Address:** 505 Fullarton Road, Netherby SA 5062
- **Location Address:** 505 Fullarton Road, Netherby SA 5062
- **DECD Region:** Southern Adelaide
- **Geographical location:** 6km from centre of Adelaide CBD
- **Telephone number:** 8372 6955
- **Fax Number:** 8372 6999
- **School website address:** www.urrbraehs.sa.edu.au
- **School e-mail address:** dl.0798.admin@schools.sa.edu.au
- **Child Parent Centre (CPC) attached:** N/A
- **Out of School Hours Care (OSHC) service:** N/A
- **February FTE student enrolment:**
- **Staffing numbers (as at February census):**

2016			2017	2018
2016	2017	2018	77	78
1032	1041	1018		79

Public Transport Access

Travel to and from Urrbrae is provided through a network of public transport services across the metropolitan area. A range of bus companies provide morning and afternoon services leaving from Cross Road and Fullarton Road. Up to date information about connections, routes and timetables can be found at the Adelaide Metro Website (adelaide.metro.com.au) or by ringing the Adelaide Metro Infoline (8210 1000).

Common services include:

- 884 and 886 services along the freeway to Crafers with connections
- 100 services along Cross Road and Marion Road
- 632 from the City
- 782, 783, 989, 990, 991 to the southern suburbs
- 992 along North East Road

Special Site Arrangements

- Member of the *Mitcham Plains Alliance*: Member schools include:
 - Preschool
 - Clarence Gardens Kindergarten
 - Cumberland Preschool Kindergarten
 - Margaret Lohmeyer Kindergarten
 - Mitcham Preschool Centre
 - Mitcham Village Kindergarten
 - Netherby Kindergarten
 - Pasadena Kindergarten
 - St James' Park Kindergarten
 - Primary
 - Clapham Primary School
 - Colonel Light Gardens Primary School
 - Edwardstown Primary School
 - Mitcham Primary School
 - Westbourne Park Primary School
 - Secondary
 - Mitcham Girls High School
 - Pasadena High School
 - Unley High School
 - Urrbrae Agricultural High School
- Member of the *Inner South Curriculum Alliance (ISCA)* focussing on VET delivery to member schools which include:
 - Australian Science and Mathematics School
 - Blackwood High School
 - Brighton Secondary School
 - Hamilton Secondary College
 - Mitcham Girls High School
 - Pasadena High School
 - Seaview High School
 - Thebarton Senior College
 - Unley High School
 - Urrbrae Agricultural High School
- Partner with **TAFE SA (Horticulture)** co-located on site. Sharing of facilities and staff expertise with regard to Certificate and Diploma level courses offered at Urrbrae TAFE.
- **Nursery and Garden Industry of SA** shares some office space at Urrbrae and facilitates industry connections into both the School and TAFE SA (Urrbrae).
- The **Nature Education Centre** is also located at Urrbrae in a purpose built facility. The Centre interacts with school programs such as the Marsupial Centre and Urrbrae Trails. The Centre also supplies assistance and resources for the teaching of Science, Biology and Environmental Studies in primary schools.
- **Urrbrae Wetland** is a joint project between DECD (Urrbrae) and Mitcham Council. The Wetland site serves two purposes; as an educational / environmental exemplar and as a flood mitigation measure for Cross Road and its surrounds. Urrbrae has the

responsibility for providing educational / environmental programs for student audiences ranging from pre-school to undergraduate levels. Mitcham Council is responsible for maintenance of the site and clearing of debris carried through water flow. A community organisation “Friends of the Wetland” meets regularly and have working bees to ensure a native plant propagation and planting program is maintained. This group’s aim is to vegetate the Wetland area with plants that existed before European settlement in SA.

2. Students (and their wellbeing)

General characteristics

Students come from throughout the metropolitan area, and also from country areas. Students must apply to attend Urrbrae – there is no zone. The vast majority apply during Year 7 to start at the school in Year 8, with a small number of students joining the school in Years 9-12. 60-80% of students come from suburbs south of Adelaide and the Hills; this varies from year to year. Many students, often as many as 30%, are the only students from their primary school, and begin Year 8 not knowing anyone else; hence there is a strong focus on transition and forming relationships in this year level.

Student well-being programs

- Pastoral Care program for 50 minutes once a week, which develops the strands of Positive Education, Child Protection, Career Strategies and Graduate Qualities across 8-12, and other year level specific foci and activities including 7-8 transition at Year 8, a community focus at Year 9, PLP support at Year 10, and Pathways support at Years 11 and 12.
- Home groups meet each morning for 15 minutes before commencing lessons for the day. At least one home group teacher works closely with Student Services staff to form a strong relationship between the student, school and home when the student commences at the school, and in most cases maintains that link with the student and their family throughout their time at the school.
- A wide range of extra-curricular activities is offered including many agricultural clubs, and sporting teams.
- A Peer Support program is in place for Year 11 students to support transitioning Year 8 students.

Student support offered

- The Student Services team provides planned, proactive and coordinated support for the emotional, physical and spiritual wellbeing of students and families at Urrbrae.
- Student Services is staffed with 2 Senior Leaders, 3 Coordinators, 2 Counsellors, 1 CPSW, 37 hours SSO support and works as a team with the Assistant Principal: Wellbeing.
- A combined focus on protective strategies, developing resilience and respectful, positive relationships is developed through the Pastoral Care program.
- Proactive support provided by two Home Group Teachers in each Year 8 and 9 home group, at least one of whom follows the class through to the end of Year 12.
- Year level based case management approach to students, with interventions and outcomes documented and reviewed.
- Case management of students is supported by regular Student Review Team meetings with regional support staff.

Student management

Teachers develop with their classes a clear classroom behaviour code. Students are expected to follow this code and may be reminded of it or redirected in their behaviour. Parents are informed of persistent inappropriate behaviour through the diary, email or by telephone. A Withdrawal Room operates during lesson time; in the Withdrawal Room

students are expected to reflect on their behaviour, complete a contract signed by their parent/caregiver identifying how their behaviour needs to change, and discuss this with the teacher before returning to class. A detention system operates at lunchtimes and once a week after school.

Student leadership

- The Student Representative Council (SRC) has members from every year level who meet under the leadership of the SRC Executive and a Student Counsellor, in order to represent student ideas and concerns as well as to work on whole school initiatives. The SRC organises student events including Casual Days, School Assemblies and charity events.
- The Peer Leaders are attached to each Year 8 Home Group and have a high profile within the school as mentors to transitioning Year 8 students.

Student Wellbeing as a school priority

Wellbeing is recognised as one of two foci underpinning Urrbrae's Strategic Priority of Rigorous Learning. This focus is further developed through:

- The use of Positive Education research and strategies to raise awareness of what impacts on wellbeing, and increase teacher and student skills in building wellbeing.
- Ensuring that best practice at key transition points informs the work of school staff to support students.
- A coherent and relevant Pastoral Care program supports school-wide wellbeing for learning, and learning for wellbeing.
- Responsive and coordinated support is provided for students to make knowledgeable decisions about their post-school pathways.

3. Key School Policies

Site Improvement Plan and other key statements or policies

UAHS VISION STATEMENT

Providing **unique opportunities** for **learners** and **future innovators**.

MISSION STATEMENTS

To be an **innovative educational leader** in Agricultural and Horticultural Science, Technology and the Environment.

To **develop engaged citizens**, with **creative and critical minds**, a **strong social conscience**, and a **love of learning**.

To **foster resilience, independence, personal responsibility and respect for others**.

STRATEGIC NAVIGATION EXERCISE

URRBRAE 2020 STATEMENT

- Our commitment to a sustainable world is complete and all pervasive. We focus on developing our understanding of both the vital role of agriculture and the use of material and information technologies in a sustainable environment.
- We have a passion for rigorous learning characterised by the transformation of information to knowledge through scientific method and inquiry learning.
- Our learning occurs in an interactive environment including the school community and local and global connections.
- Our graduates are positive, creative, articulate active global citizens who have a wide range of skills.

Recent key outcomes

Refer to the School's Annual Report 2017 on our web page www.urrbraehs.sa.edu.au

4. Curriculum

Subject offerings

Urrbrae Agricultural High School is the only comprehensive special interest agricultural secondary school in South Australia. It is recognised as a centre of excellence in student learning with a focus on agriculture, technology and the environment. These subjects are integrated across the school curriculum. Alongside these specialist subjects, Urrbrae students study the normal range of secondary school subjects, except Languages other than English, or can choose from specialised Agricultural, Automotive and Engineering Certificate courses at senior school level.

- General Year 8 – 12 curriculum
- SACE (Stage 1 and Stage 2)
- Australian Curriculum (Years 8 – 10). Languages (other than English) are not offered, however students wishing to undertake a language course can be accommodated.
- VET (UAHS and Alliance offerings)
- School Based Apprenticeships
- Some Stage 1 and Stage 2 subjects are offered in conjunction with Mitcham Girls High School and Unley High School (The Alliance). These offerings differ from year to year and are dependent on demand.

Open Access/Distance Education provision

- Open Access Options (especially in terms of Languages)
- Open Access negotiated and accessed on case by case basis.

Special Needs

- Individual Education Programs (IEP) and specific student learning needs are identified through the selection process and subsequent student transition information.
- Support is available to identified students in classroom and practical learning environments, with appropriately trained teaching staff and SSOs.
- Curriculum modifications are usually in relation to task design and assessment requirements.
- The Special Education Coordinator and a number of teaching and SSO staff assist with Negotiated Education Program (NEP) students.
- Modified English and Mathematics classes occur at all year levels, 8 – 12.

Special curriculum features

- Agriculture, Science, Technology and Environment focus – Designated school for STEM funding 2017/18.
- Selective entry of all students based on interest in these areas.
- Students undertake compulsory Agriculture subjects in Years 8 and 9, and are then able to choose Agriculture subjects in Years 10 – 12.
- Cross disciplinary subjects related to school foci – Sustainable Futures, Urrbrae Trails.
- Peer Leader Program – selected Year 11 students are trained as mentors who work with Year 8 classes to assist with their transition to high school.
- Integration of agricultural show experiences at all year levels – significant involvement in Royal Adelaide Show, and participation and competing at Mt Barker Show, Mt Pleasant Show, Paskeville Field Day, Karoonda Field Day etc.
- Trade Training Centre facilities and auspiced programs in the areas of Engineering and Automotive Maintenance.

Teaching methodology

Urrbrae is known as a leading edge educator in the foci areas of Agriculture, Environment and Technology. The foundation of teaching at Urrbrae is the link between theoretical knowledge and practical application; preparing young people for a future in which they are active, contributing citizens. Learning is enhanced through a teaching environment which encourages and supports ongoing interaction between educators, agricultural professionals, and relevant industry experts. This collaborative approach supports problem and inquiry based learning grounded in contexts of real world ideas, problems and issues. Students have significant exposure to practical, 'hands on' learning, both in the setting of the Urrbrae farm and in a range of authentic contexts including community, industry and other work environments.

Urrbrae students have access to laptop technology to support their learning through Urrbrae's Bring Your Own Device (BYOD) scheme. This ensures that students have access to teaching materials and online resources for all subjects, either at home or at school. Teachers' classroom practices are changing to accommodate different approaches to learning that take advantage of this access. Various technologies are utilised to enrich face-to-face instruction and personalise learning for students. Many rooms are equipped with interactive whiteboards, and students are able to access the online networks both within the classroom and on the extensive agricultural grounds of the school.

Teachers are encouraged to continually revise and refine their pedagogical understandings and practices through a range of professional development opportunities, both within the school setting and in broader educational settings. A significant proportion of professional development is focused on emerging areas of research and initiatives in relation to the school foci, and ensuring that students have access to networks of professionals in the field to support them in their learning.

Student assessment procedures and reporting

- Learning and Assessment Plans provided to parents via Daymap.
- Assessment tasks and support materials on Daymap.
- Individual assessment results lodged on Daymap.
- Formal reporting – 1 written report at the end of each semester of study.
- Subject report inclusions – subject grade, topics studied, behaviour and attitude indicators, lesson attendance data.
- Home Group report inclusions – behaviour and attitude indicators, extra-curricular activities, school attendance data.
- Reports posted to parents (both sets if necessary).
- Other reporting bodies include VET, Open Access, School of Languages and SACE. These reports are also provided to parents, either directly or via the school.
- Parent teacher interviews held in term 1. All teachers at all year levels are available for parents to discuss their children's progress.
- Ongoing regular feedback provided to parents via email, phone calls, Daymap messaging, meetings etc.
- Progress reports undertaken by Year Level Managers at regular intervals to identify students at risk.
- Achievement data analysed by Year Level Managers every term.

Joint programmes

- Site shared by TAFE with Horticultural focus.
- Other organisations on site include the Nursery Garden Industry SA, Landscaping Association of SA.
- State funded Nature Education Centre on site.
- The Urrbrae Wetland, whose education programs are incorporated into the school's curriculum offerings, is located on the western Urrbrae grounds.
- Provision of an Pathways Manager to provide information and support to parents and students for Apprenticeship Pathways.
- Agricultural Partnerships

Urrbrae is fortunate to have the support of many relevant breed associations, providing varying levels of support and advice to improve the school's livestock teaching programs. The school's alpaca and Boer goat programs receive positive support from their respective breed associations. The SA Region of the Australian Alpaca Association holds handler-training days at Urrbrae for the benefit of the students, while members of the Boer Goat Association provide advice regarding the school's management and production program. The SA Apiary Association supports the school's bee program with advice, and the provision of end of year prizes for students.

The SA branch of Herefords Australia holds at least one committee meeting at the school, before inspecting the school's stud animals to provide guidance and advice on the breeding program. Members have donated straws of semen and provided loan females to enhance the herd development. In a similar manner, the Urrbrae Suffolk Stud has benefited from the support of the Suffolk Sheep Society of SA with committee members giving of their time for flock assessment, and student instruction on show preparation and sheep handling. At the agricultural shows that Urrbrae attends, many Suffolk breeders use Urrbrae students to assist with their show stock.

A very close working relationship exists with the Royal Agricultural and Horticultural Society. Urrbrae students are involved in stewarding and assisting with judging across a range of competitive classes – wool, honey, sheep and cattle; as well as providing the bulk of the students who work within the Agricultural Learning Centre, which is jointly operated by DECD and the RAHS. As a part of the livestock focus of the school, the DECD Animal Ethics Committee has chosen to hold all of its meetings at Urrbrae.

As well as the livestock associations, Urrbrae has established regular relationships with a number of industry partners. Examples include Gilbert Beekeeping Supplies SA who support the school's bee project with provision of advice, equipment and assistance with specific weekend beekeeping courses for students to further their interest and involvement with apiculture. SARDI operates a number of lucerne trials on the school grounds. The school's white wines are produced in the wine facilities of the University of Adelaide's Waite Campus. Representatives of the pig industry present information regarding pig handling skills, sales and products as well as advising on aspects of the school's piggery facilities. Utilising resources from AquaSave for the Department of Water, Environment and Natural Resources, Urrbrae is involved in the ongoing breeding and release program of the endangered fish, the Purple Spotted Gudgeon.

5. Sporting Activities

State-wide Knockout Sport, VISTA Zone sport, SASSSA Sport, Southern Zone Sport, House Sporting events, Annual Ski Trips.

6. Co-Curricular Activities

Agriculture and Farm

Alpaca Club, Aquaculture Club, Barn Market, Bee Club, Cattle Club, Farm Support, Goat Club, Heifer Club, Horse Club, Marsupials Club, Mount Barker Show, Mount Pleasant Show, Nature Education Centre, Paskeville Field Day, Pig Club, Plant Club, Poultry Club, Reptile Club, Royal Adelaide Show, Sheep Club, Steer Club, Student Agricultural Committee.

Arts

Jazz Combo, Six Plus Ensemble, Stage Band, Student Arts Committee, Vocal Ensemble.

Environment and Technology

Australian Youth Climate Coalition, BEBRAS Computing Challenge, Biogas Project, Digital Leaders, Environmental Focus Group, Informatics Competition, PICSE Scholarship, Programming Club, River Murray Group, Tech Showcase, Trees for Life, Wombat Camp, Youth Environment Council.

Student Wellbeing

Community Connections, Deadly Start, Formal Committee, Jumper Committee, Learn to Lead, Life in the Uni Lane, Peer Leaders, Photography Club, School Council, Scrabble Competition, Student Exchange Host, Student Representative Council, Student Wellbeing Committee, Teen Support Committee, World Challenge, Youth Advisory Committee.

Faculty

ANCQ Chemistry Quiz, ANZAC Day Assembly, Australian Maths Competition, Curriculum Committee, Debating, Dorothea Mackellar Poetry, Geography Competition, Heywire Competition, History Competition, MASA Quiz Night, Mathematics Challenge, Meet the Writers Festival, Oliphant Science Competition, Pedal Prix, Plain English Speaking Award, Premier's Reading Challenge, Justice Country, Kids Teaching Kids, RCS Essay Competition, Reconciliation Week, Remembrance Day Assembly, Share Market Game, Spring Poetry Competition, Writers Club, Young Writers' Award.

7. Staff and their Welfare

Staff profile

Staff Profile	
• Leadership Positions	• 24
• Staff	• 79
• Step 9	• 54%
• Female	• 46%
• Identify as non-European background	• 2%
• Taught for less than 5 years	• 2.5%
• Staff turnover	• 3% per Annum

Leadership structure

One Principal, one Deputy Principal, two Assistant Principals, six Senior Leaders and fourteen Coordinators.

Staff support systems

Each staff member has a line manager to discuss management and performance issues.

School Counsellors are available for initial consultations with staff. The Employee Assistance Program (EAP) is available for more detailed assistance.

8. Incentives, support and award conditions for Staff

Complexity placement points	Socio economic rating is 7.
Isolation placement points	N/A
Shorter terms	N/A
Travelling time	
Students travelling from Fleurieu Peninsula, Murray River, Southern Vales, Hills face, many travel up to 3 hours per day.	
Housing assistance	N/A
Cash in lieu of removal allowance	N/A
Additional increment allowance	N/A
Designated schools benefits	N/A
Aboriginal/Anangu schools	N/A
Medical and dental treatment expenses	N/A
Locality allowances	N/A
Relocation assistance	N/A
Principal's telephone costs	N/A

9. School Facilities

Buildings and grounds

General learning areas (Arts, English, Mathematics, Environment and Humanities and the Student Centre) are housed in circa 1950's buildings. In the late 90's Urrbrae Education Centre was formed and included the amalgamation of TAFE (SA) School of Horticulture on site. When the redevelopment was finished in 2000, new buildings included: a shared administration centre, repositioned farm, Urrbrae/TAFE individual and shared facilities, new science labs, student cafeteria and canteen, staff room, farm shed complexes, TAFE lecture rooms adjoining grounds for turf courses and propagation areas. The farm also gained new buildings for Aquaculture, a Winery and Piggery, as well as sheep shearing facilities.

In 2010 School Council developed and funded a project to replace our dilapidated Agriculture Teaching Centre. Within six months this ambitious project saw the completed construction of the new Urrbrae Agricultural Science classroom block, adjacent to our existing glass houses, propagation sheds, plant hardening areas and Year 8 gardens.

We are currently refurbishing a dedicated STEM centre adjacent to the administration block as part of our STEMworks project. This is expected to be finished by the end of 2018. Our 10 million dollar Building Better Schools Grant will see the upgrading and construction of several areas within the next 5 years.

Heating and Cooling

All teaching blocks and staff areas are serviced by reverse cycle air conditioning systems, which are a combination of timed systems and split systems (manually operated).

Specialist facilities and equipment

- **Farm:** The farm area is 42 ha and accommodates animal husbandry, an orchard, lucerne cropping and general feedlot areas. Our agricultural focus is heavily dependent on this area for the delivery of our courses. Specialist areas such as piggery,

aquaculture, honey production, winery and the marsupial enclosure are also used in our approach to Science with Practice (our school motto). Equipment (tractors etc) are maintained at industry standard or higher. In 2016 a Case Tractor, designed for driver training, was purchased for the Farm.

- **Tech Studies:** Urrbrae applied for and received a Trade Schools grant and has subsequently re-equipped both Tech Studies and Agriculture with industry level equipment. Agriculture has installed exemplar John Deere GPS systems as well as up to date stock weighing machines.
- **Science:** The 2000 Urrbrae redevelopment equipped the school with a new Science block incorporating 8 labs, a preparation area and staff room. The Science labs were commensurately equipped for Animal Science, Ag Studies, Physics, Chemistry, Biology, general Science, and Geology.
- **STEM Facility:** A \$2,500,000 grant has been allocated to the school, this facility is currently a work in progress.
- **Shared Resource Centre:** The Resource Centre is shared between Urrbrae Agricultural High School and TAFE SA (Regional). There are 3 separate seminar rooms as well as an open centre area, which provides 3 class areas, study area, Tech Deck area, as well as staff offices. Collections are comprised of hard copies, e-books and Wi-Fi access to the school / TAFE / systems. Internet access is also available.
- **Solar Grant 2017:** Urrbrae has been granted \$250,000 to support the installation of solar panels and LED lighting to reduce energy costs.
- **Home Economics:** Urrbrae has two self-contained Home Economics buildings. Maximum class size is managed at approximately 24 students. The facilities are well equipped and reflect industry level equipment. In addition we have a Skill Centre building (Commonwealth funded) which contains 4 industrial stove / oven combinations, industrial dishwasher and fridges.
- **Sports Facilities:** Sports facilities at Urrbrae service our own PE and Outdoor Ed programs and consist of the following: Climbing wall tower, 2 tennis courts, basketball courts, school gymnasium, football oval, soccer pitch and ½ Olympic size swimming pool. After hours, many of the facilities are heavily used by community groups.

Student Facilities

Student facilities are provided in Urrbrae's new Canteen / Common Room / Staff Room building. There is also a separate TAFE Common Room. The Urrbrae student Common Room is adjacent to the Canteen servery and includes hot water facilities, microwaves, vending machines, and tables and seating.

Staff Facilities

Staff rooms exist in all teaching blocks and are used for preparation and marking, contact with parents and students, and preparation. The staff room is located in our canteen / student common room and is used by staff at recess and lunch times as a quiet area. It has a superb view over the Adelaide Hills. A wood fired oven for TAFE and school use has been built for staff and TAFE social occasions.

Access for students and staff with disabilities

Urrbrae has ramps built for students to access our learning areas, however there is still considerable difficulty in using wheelchairs on the farm. Not all farm areas (eg paddocks, vineyard, orchard) have easy wheelchair access.

Access to bus transport

Refer to page 2.

10. School Operations

Decision making structures

Urrbrae School Council is highly supportive of the Urrbrae community; students, parents and all staff. Operations with the Council are based on Governing Council principles and Council is part of our decision making process.

The school's decision making process aims at including all members of our community in consultation and seeking advice on issues pertaining to students and their scholastic achievement and improvement.

In 2016 much discussion revolved around the quality of decision making at Urrbrae and particularly staff input into the process. The Principal convened a working party to plan for changes to decision making processes and structures for 2017 onwards, based on staff and leader input.

DECISION MAKING GROUP (DMG)

FUNCTION

- Decision-making body of the school
- Determines category of issue raised and refers it for action
- Ratifies decisions recommended by Working Parties and Consultation Groups
- Provides guidelines for Working Parties and Consultation Groups
- Approves and monitors implementation plans for new initiatives
- Assures evaluative mechanisms are in place and actioned

COMPOSITION

The Decision Making Group comprises:

- Principal
- Business Manager
- Deputy Principal: Personnel/Timetable
- Assistant Principal: Agriculture
- Assistant Principal: Curriculum & Wellbeing
- Seniors Leaders: Senior School, Middle School, Student Pathways, Quality Pedagogy & eLearning, Literacy, and Numeracy
- Five elected positions

Members of the Decision Making Group commit to:

- A whole school perspective, with a focus on improved outcomes for students
- Attending regularly and providing quality input to discussion
- Preparation before meetings, e.g., reading any information and data supplied, conferring with colleagues
- Presenting information professionally

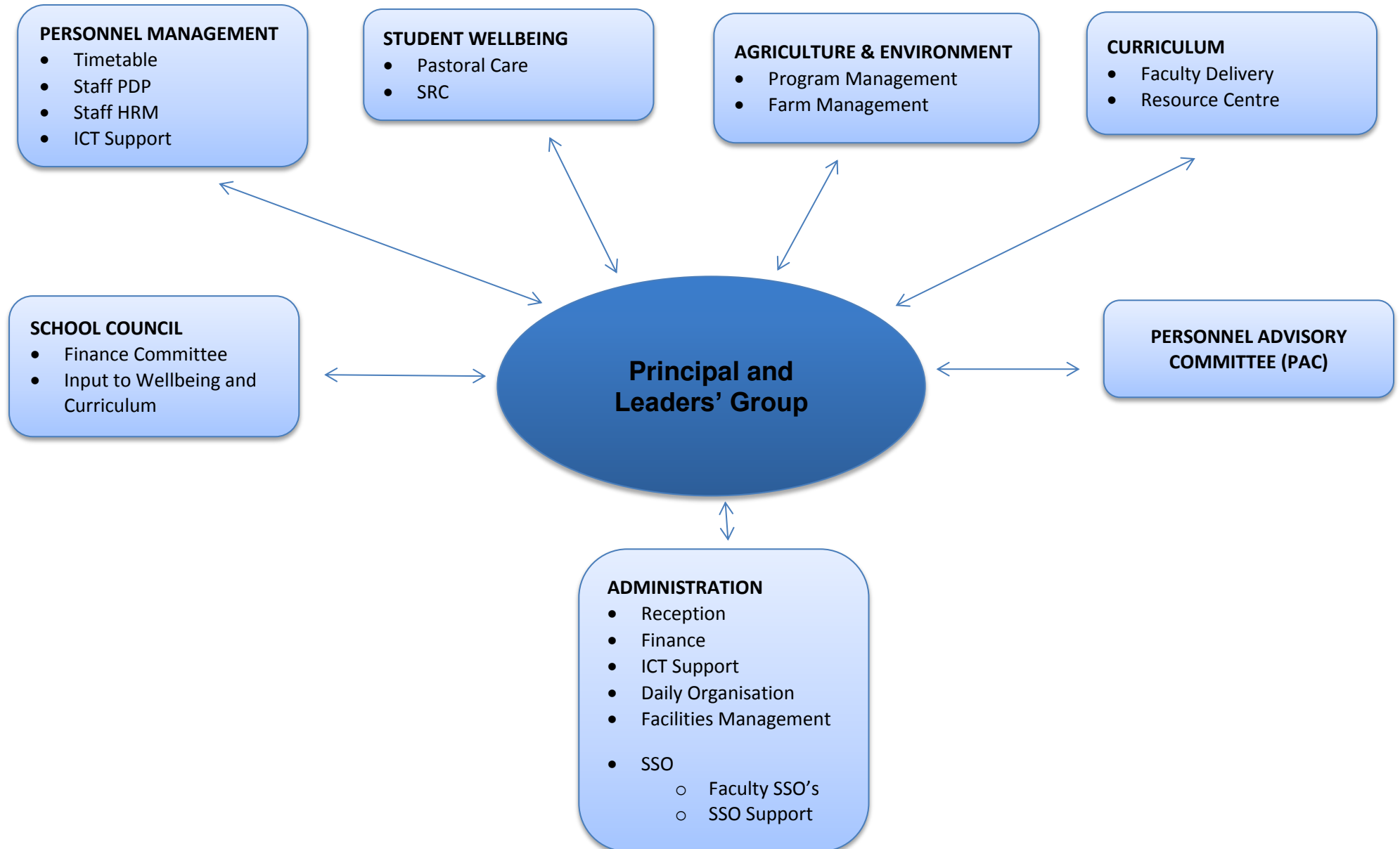
ELECTED POSITIONS:

There are five elected positions on the Decision Making Group:

- Three positions are available for teaching staff who are not already in a leadership position
- Two positions are available for B1 leaders

The term of election is one year.

URRBRAE AGRICULTURAL HIGH SCHOOL ORGANISATION CHART



Regular Publications

- School Newsletter (3 x / term)
- Curriculum Handbook (Updated annually)
- Staff Handbook (Updated every 3 years)
- Staff and Student Bulletins (Daily)
- Emergency Notices eg Swine Flu, Influenza breakout, closure of school, bushfire alerts, school evacuation (as needed)
- Student Progress Reports (each semester)

All of the above are in electronic form and can be accessed through our website or internally through DayMap. Hard copies are used where appropriate and especially when Emergency Notices need to be sent home on the day. When communication is in hard copy it is duplicated on our website and/or sent to parents via email (on a needs basis).

School Financial Position

Resource Entitlement Statement (February 2017)	\$12,046,459.54
Estimated School Fee Income	\$667,140.00

Special Funding

Resource Allocation Adjustment Panel <i>Approved funding for Special Interest Agriculture Program (included in total RES Statement)</i>	\$926,969.16
Flexible Learning Options <i>(included in total RES Statement)</i>	\$27,943.00
Disability Supplementary Funding <i>(included in RES Statement)</i>	\$47,924.62

11. Local Community

General Characteristics

Urrbrae Agricultural High School is situated in Netherby, twenty three kilometres from Adelaide's GPO. However, our student population is drawn from South Australia, as Urrbrae has no defined catchment area. This is due to the nature of our school in specializing in Agriculture.

Urrbrae has an excellent relationship with our local community; residents, businesses and Local Council. The local community is residential with Mitcham Shopping Centre serving the local urban community's needs.

Parent and Community Involvement

Parent and community involvement is high with parents being involved in an active School Council and volunteering to assist in our Canteen and Library. Parents involved in agri-business and production also assist in sharing their expertise with our students via the agriculture subjects taught at Urrbrae. Urrbrae Old Scholars who have returned to the land also host Year 11 and 12 students at their "mixed" farms in either the mid-north or south-east each year. This gives present students a perspective on rural operations, and is valuable in researching future employment pathways.

Feeder or Destination Schools

In 2017, 97 different feeder primary schools contributed to Urrbrae's 2018 Year 8 intake. These were located as far away as the Fleurieu Peninsula, Murray Bridge, Gawler, Yorke Peninsula, Adelaide Hills, and the greater Adelaide metropolitan area.

Other local care and educational facilities

Public high schools in close proximity are Unley High School and Mitcham Girls High School. Private high schools in close proximity are Scotch College, Mercedes and Cabra College.

Commercial/industrial and shopping facilities

Because of our metropolitan location access to local shopping and service facilities is immediate and simple due to their proximity. The closest main shopping centre is Mitcham Shopping Centre (Belair Road, Mitcham) with others being easily accessible eg Woolworths and Big W complex at the corner of Cross Roads and Goodwood Road, and the Unley Shopping Centre and Target on Unley Road, Unley.

Other local facilities

Locality guides in the Yellow Pages provide comprehensive lists of services in the Mitcham, Unley and Netherby areas.

Availability of staff housing

The Principal's residence and Farm Manager's residence are both managed by Government Employee Housing on a rental basis. At time of writing there is dialogue with Teacher Housing and DECD regarding supervision and administration of these sites returning to Urrbrae. The Principal's residence is currently unoccupied.

Accessibility

Urrbrae Agricultural High School is easily accessible via public and private transport. It is situated on the corner of Cross Road and Fullarton Road, with access points from either main road. Public bus stops exist close to the school on each of these roads.

Local Government body

Our local body is Mitcham City Council located on Belair Road, Mitcham (Mitcham@mitchamcouncil.sa.gov.au). The present Lord Mayor is Glenn Spear.

12. Further Comments

Industry support and patronage has been and continues to be a major aspect of Urrbrae's successful programs.

In the 1950's the Mortlock family bequeathed a sum of money to establish a scholarship for the enhancement of academic success. This continues as a significant component of the school's "rewarding success" program. In addition there are a number of smaller scholarships and prizes given to the school by various donors to support student progress both academically and through application to studies.

In recent years the McBride Pastoral Company has added their support to scholarships and capital development in the school.

Summary

- Mortlock Bequest
 - Approximately 10 prizes at Years 8,9,10,11,12 (each year level)
 - 6 Undergraduate (Agriculture related areas of study)
 - Up to 2 Honours (Agriculture related areas of study)
 - Up to 2 Masters (Agriculture related areas of study)
 - 1 PhD (Agriculture related areas of study – in conjunction with the Urrbrae Memorial Fund)

Total \$50,000
- AJ and PA McBride Pty Ltd Agriculture Prizes
 - Up to 2 per class in Years 8,9,10,11 and 12, by application in Years 11 and 12

Total \$5,000
- Royal Adelaide Agricultural and Horticultural Show Society
 - Awarded to top student proceeding to Agriculture and/or Horticulture Studies at tertiary level.

Total \$2,000
- LC Bettison Trust Fund
 - Recognition of effort in Agriculture studies.

Total \$100